

## DeLaval water troughs and bowls More water means more milk

### DeLaval water accessories can make a difference

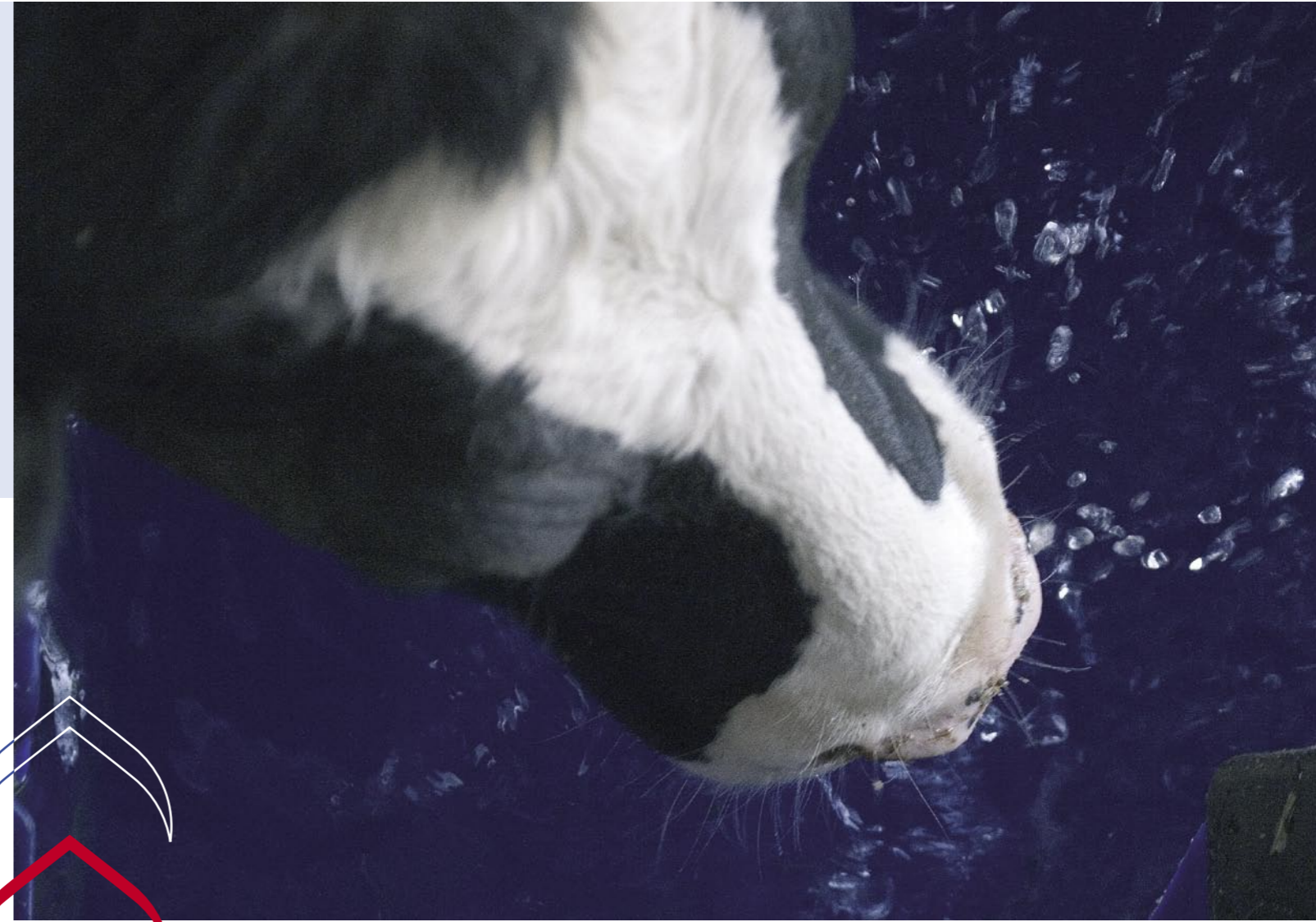
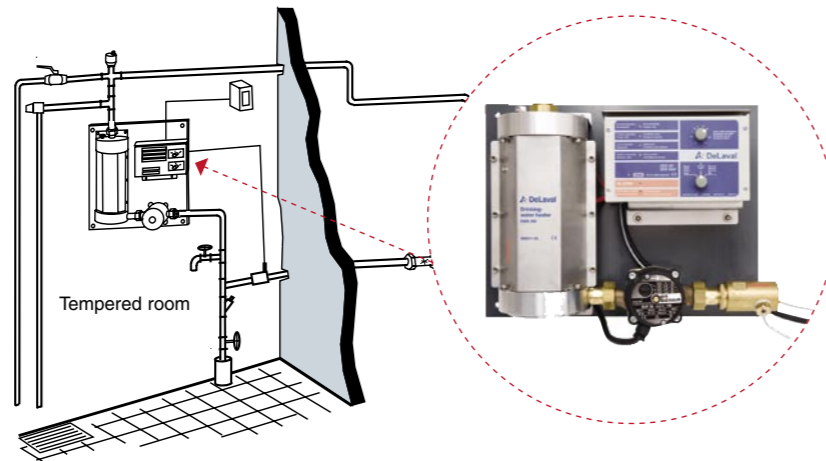


It might be that your trough or bowl is perfectly shaped and in good condition. But what about the water supply? A cow can drink up to 25 litres per minute. How much water does your valve supply per minute? DeLaval provides high capacity floats and valves for bowls and troughs. Simply ask your local DeLaval dealer about the numerous available options.

#### DeLaval drinking water heater DWH200

DeLaval DWH200 is designed for use in non-insulated open air barns. It prevents the water supply circuit, installed water bowls and water troughs from freezing by heating and circulating the supply water in the barn.

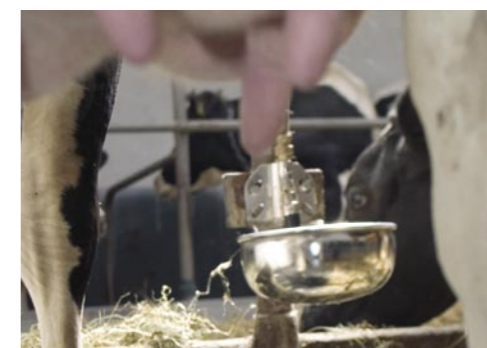
DeLaval DWH200 should be used in combination with water bowls and/or water troughs. The heater can be used for supplying water circuits up to 200 metres long.



Dealer stamp



## Satisfying all her drinking needs



### **Increased water intake improves milk production**

Milk comprises almost 90 percent water, so it's not surprising that a cow's water intake has a major effect on her milk production. The actual equation is straightforward. When you provide correct water supply, cows drink more, eat more and thus produce more milk.

It sounds simple, but the amounts of water involved are significant. One kilo of dry matter intake utilises up to five litres of water. Cows need at least three litres of water to produce one litre of milk. This means that high yielding cows need more than 150 litres of fresh water every day! Meeting this need is therefore an essential task for every dairy farmer.

### **Make drinking easy and convenient**

Cows like to drink fast – up to 25 litres of water per minute. If they can't, their water intake may fall off and their milk

yield could suffer. For example, a 40 percent reduction in water intake can cut milk production by 25 percent.

Cows like to drink when they eat and just after milking. They also prefer a large, calm drinking surface from which they can drink quickly and without stress. Furthermore, such natural drinking behaviour promotes further eating, even more drinking and higher milk yields.

### **We understand your cows' needs**

DeLaval water supply products meet your cows' physiological and social drinking requirements. Our bowls and troughs provide easy, convenient access to water, in tied-up stalls, loose-housing and pastures. Cows can drink as much as they want and as quickly as they want without having to wait.

The water they drink should also be hygienic and tasty. DeLaval bowls and troughs minimize microbial growth and hinder dirt pollution. This also makes them very easy to keep clean, so you save valuable time.

Our durable, well-proven water supply range promotes years of reliable, trouble-free operation which you'll appreciate as much as your cows.

# Provide safe drinking water the natural way



Hygiene, capacity and accessibility are critical factors when supplying water in a loose-housing environment. We use either PVC or stainless steel in our hygienic, impact resistant and durable water troughs, together with a high capacity water valve. DeLaval water troughs are designed for easy cow access to facilitate comfortable and undisturbed drinking.

## DeLaval tip tank ST150 and ST200

DeLaval ST150 and ST200 give a high capacity water supply to animals. These tip tanks provide a large, calm drinking surface from which the animal can drink quickly and without stress. The units are very easy to clean and maintain. The water level of the DeLaval ST150 and ST200 is kept very low, so tipping the tank will spill just a small amount of water. Instead of maintaining a deep water level, these tip tanks have a high capacity float to give fast, high volume water supply. These tanks can be ordered in a wall or floor mounted version. Frost protection and a circulation pipe, which fits to DeLaval DWH200, are optional.

DeLaval ST150 is 1.50 metres long and contains a maximum 56 litres.

DeLaval ST200 is 2.00 metres long and contains a maximum 75 litres.



- ① Easy tipping with a special handle and lock function.
- ② High capacity float-valve for optimal water supply volume.
- ③ Low water level so water dumping is minimized.
- ④ Special trough shape for easy cleaning and minimal dirt build-up.
- ⑤ Strong and durable construction for all conditions.
- ⑥ Available with a floor or wall mounted frame.

## A DeLaval water trough S28

Free access to fresh and clean water is essential for production, growth, animal health and farm profitability. DeLaval S28 is made of stainless steel and has excellent capacity. The design gives outstanding hygienic conditions and unlimited durability. This water valve trough gives the animal constant access to fresh water at up to 28 litres/minute.

## B DeLaval energy-free waterer

DeLaval energy-free waterer has thick insulation to help keep water cool and free from algae in hot weather. It also hinders freezing in cold weather, which makes it ideal for use in pastures. A patented, easy-to-push-down door closure makes full use of the capacity and permits sloping sides that hinder dirt from polluting the water. These units are available in one and two lid versions.

One lid, capacity: 64 litres.  
Usage max: 50 dairy cows, 120 beef cattle.

Two lids, capacity: 83 litres.  
Usage max: 70 dairy cows, 150 beef cattle.

## C DeLaval water trough P80

DeLaval P80 is made of UV resistant, high quality polyethylene material and has two rounded drinking points. Due to its special rounded shape it allows two cows to drink at the same time. DeLaval P80 can be mounted on the floor or wall and has large drainage holes underneath for fast, correct draining. Maximum capacity is 30 cows.

## D DeLaval water trough E1 and E2

These electrically-heated, thermostat-controlled units prevent drinking water from freezing. Their basins tip up for easy cleaning, so water also stays clean and fresh. The laminated heating pad is fully waterproof for safe and trouble-free operation.

Two sizes are available. The 26 litre DeLaval E1 (one lid) is designed for up to 25 cows, and the 42 litre DeLaval E2 (two lids) is for up to 50 cows.

## E DeLaval water trough T80

DeLaval T80 can be wall or floor mounted. Built in tough, impact-resistant polyethylene, the trough's double walls provide extra insulation and help prevent freezing. Its float and valve system is located at the back of the tank in the centre, for easy water accessibility. It comes with a built-in tip handle and emptying is easy. Capacity for 40 cows.

## F DeLaval water trough T400

A tip tank for the loose-housing barn which can be either wall or floor mounted due to its special bracket. Built in tough, impact-resistant polyethylene, the trough's double wall provides extra insulation and helps prevent freezing.

A built-in tip handle gives easy emptying. The 220 cm long DeLaval T400 holds 380 litres for 80 cows.



## DeLaval bowls meet water demand in tied-up stalls



Water bowls are the obvious choice for supplying water in tied-up stalls. Their large drinking surfaces and high flow rates fulfil a cow's natural drinking preferences. We recommend one bowl per cow to reduce stress and increase water intake. All bowls hinder dirt build-up and are easy to clean. The unique, patented volume valve delivers a gentle, non-splash, large volume flow and it is available for most models.

## DeLaval pasture troughs for the warm days on pasture



A correctly functioning water trough providing a continual supply of clean water, is a must during the hot days and warm nights your animals are outside the barn. High capacity DeLaval pasture troughs are made of impact resistance, lightweight and durable PVC. Large drainage plugs and a rounded shape mean easy cleaning.

### A DeLaval water bowl C20

DeLaval C20 is a premium quality bowl for high yielding cows requiring large volumes of water. Its easily operated volume valve delivers up to 20 litres/minute. Acid-proof enamel gives a smooth, hygienic and long-life surface.

### B DeLaval water bowl S22

DeLaval S22 is another premium, long-lasting stainless steel product with an outstanding capacity of up to 22 litres/minute. The bowl features built-in spillage protection and its large surface area promotes increased water intake.

### C DeLaval water bowl C10

DeLaval C10 is a standard, all-purpose bowl which covers the ground between DeLaval C20 and DeLaval C5. It combines an acid-proof enamel bowl with a capacity of 10 litres/minute.

### D DeLaval water bowl C5

DeLaval C5 is for heifers and calves. This basic, value-for-money bowl supplies five litres/minute which is sufficient for these animals. The black, coated enamel is easy to keep clean.

### E DeLaval pasture tip tank PT80

DeLaval PT80 gives water supply on pasture. Its special shape makes it easy for cows to access it from three sides and it's simple to clean. DeLaval PT80 can be tipped over like a tip tank in the barn. Suitable for 40 cows.

### F DeLaval pasture tanks P400, P600 and P1000

DeLaval P400, P600 and P1000 are made of tough, impact-resistant polyethylene. Their oval shape makes them easy to access around the tank. This shape, together with light weight and a large drainage hole, makes these tanks very easy to clean. Their weight also makes them easy to reposition on pasture or to take in during winter.

### G DeLaval water trough B300

DeLaval B300 is made of tough, impact-resistant polyethylene. Due to its rounded shape, the trough will not collect dirt. It can be installed on pasture or in the barn for up to 90 cows. The central float housing means the trough can be positioned so that two cow groups have access to it without mixing the groups.



1 Easy-to-operate high volume valve encourages cows to drink.

2 Large drinking surface promotes natural drinking behaviour.

3 Sloped bracket hinders dirt build-up and reduces the risk of contamination.

4 Non-splash outlet gives the gentle flow cows prefer.

5 Smooth, acid-resistant enamel is easy to clean and longer lasting.

